

BQE Forum

Port Authority/Port Department Perspectives



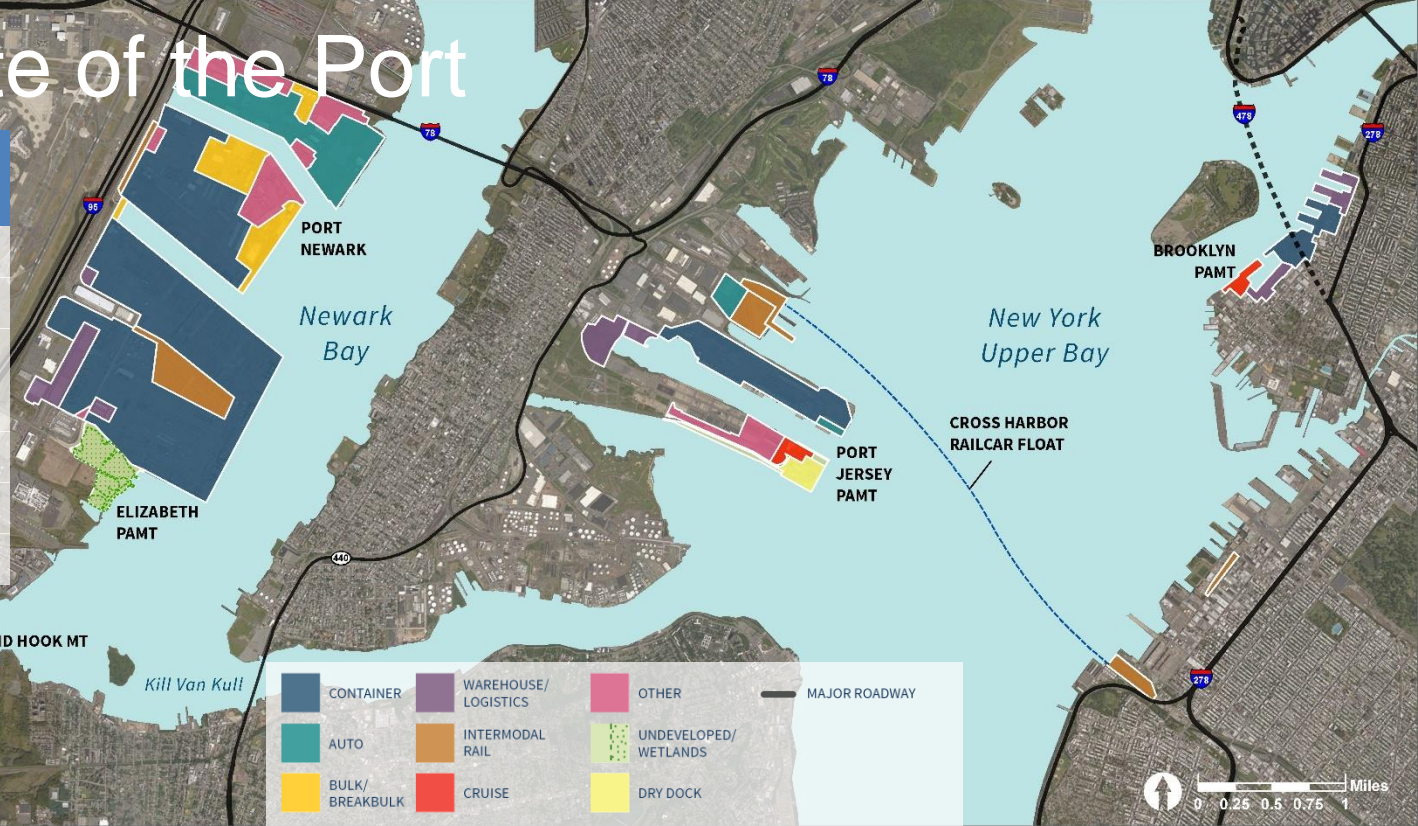
May, 2019

Port Department

Current State of the Port

Key Statistics: Port Department Facilities

Acres	3,000+
Port Newark	846
Elizabeth PAMT	1,124
Howland Hook MT	279
Port Jersey PAMT	419
Brooklyn PAMT	151
Tenants	~60



Cargo Volumes (2018)

7.2 million
Containers (TEU)

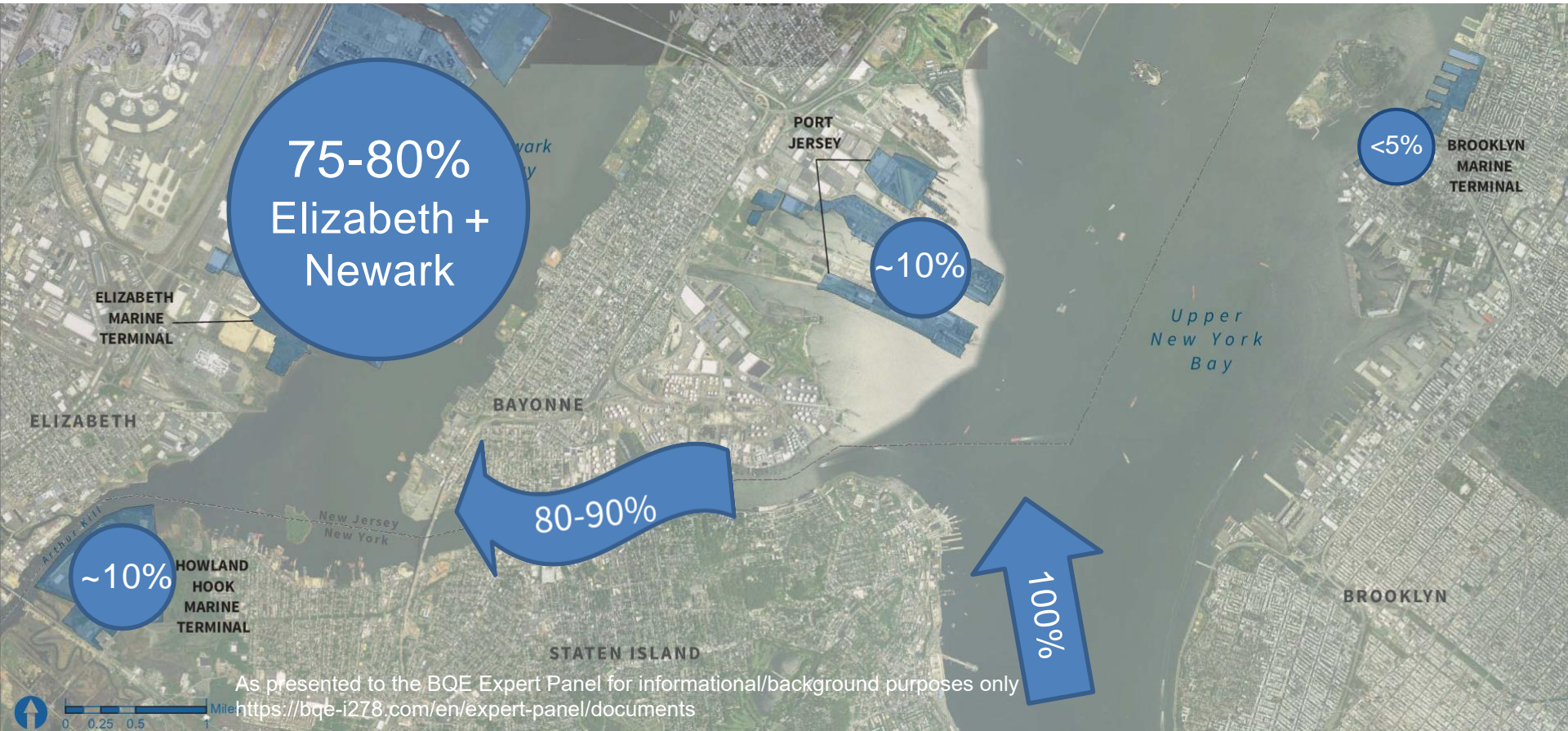
645,760
By Rail (Lifts)

3.6 million
Dry Bulk (Tons)

573,035
Autos (Units)

856,271
Cruise (Passengers)

Current Container Flows of Port



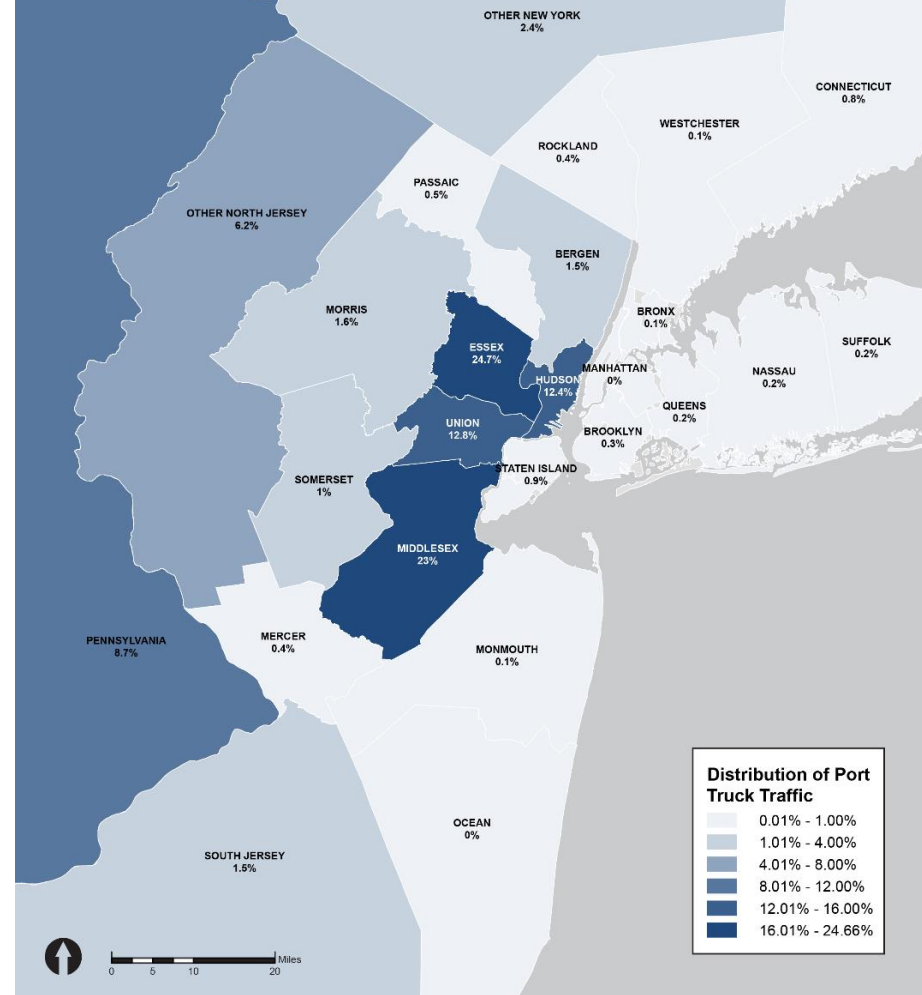
Port Truck Distribution



Primary destinations (first stop) for Port truck traffic (top 4 counties account for almost 75% of trucks)



Interstate highways, showing major routes for Port trucks and peak traffic congestion



Port Truck Distribution



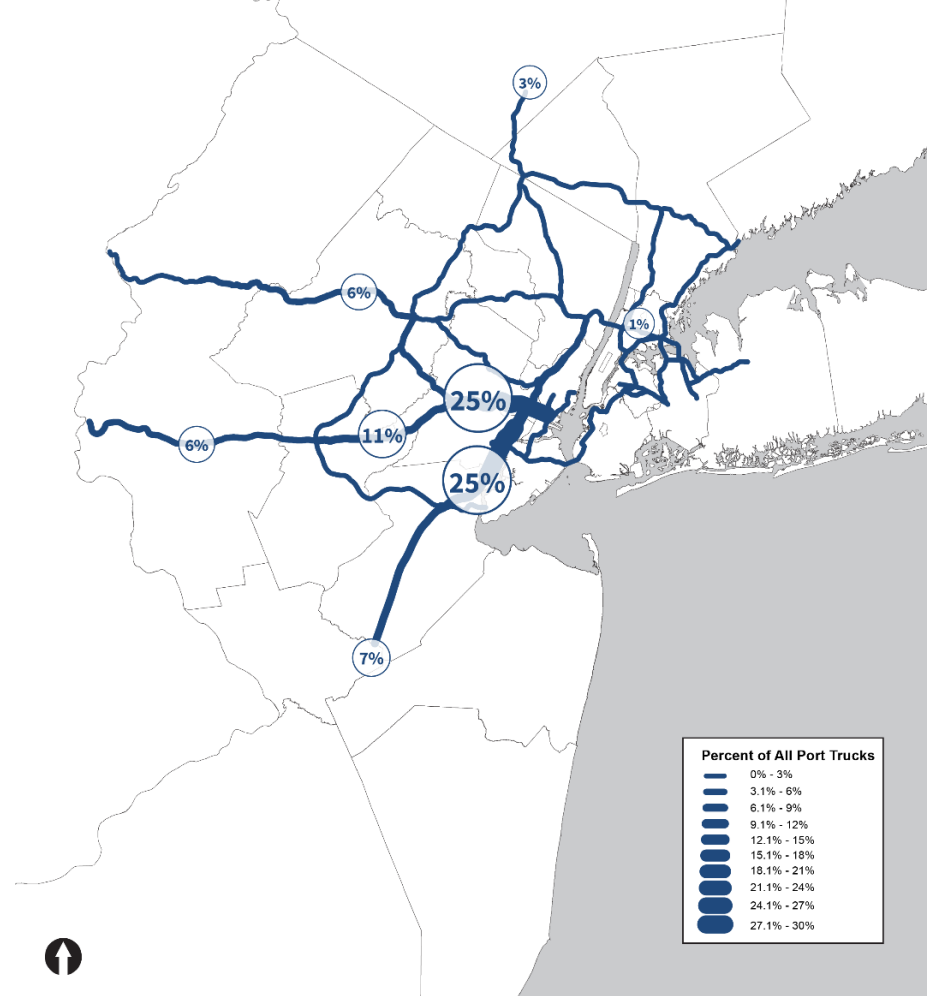
Primary destinations (first stop) for Port truck traffic (top 4 counties account for almost 75% of trucks)



Interstate highways, showing major routes for Port trucks and peak traffic congestion

Key east-west corridors:
I-78 and I-80 (along with I-280 and NJ 24)

Key north-south corridors:
I-95, I-287 and NJ 17



Regional Rail Network



Other Emerging Trends and Issues

Trucking and Logistics

- Truck data capture
- Shared chassis pools and empty container depots
- Autonomous trucking and platooning
- Driver supply
- Intelligent transportation systems (ITS)
- Digitization of information streams



Infrastructure and Terminals

- Kill Van Kull channel becomes a greater constraint without mitigation
- Modal split has opportunity to increase, including rail and marine highway (barge)
- Tenants want to invest in capacity to support growth