

BQE TOUR May 29, 2019

LEGEND

— Tour Route

- 1** Columbia Heights Bridge
- 2** Pier 2 Uplands
- 3** Montague Turnaround
- 4** Joralemon Access Point
- 5** Atlantic Avenue Interchange

--- Subway Lines

NYC Transit Infrastructure In Project Area



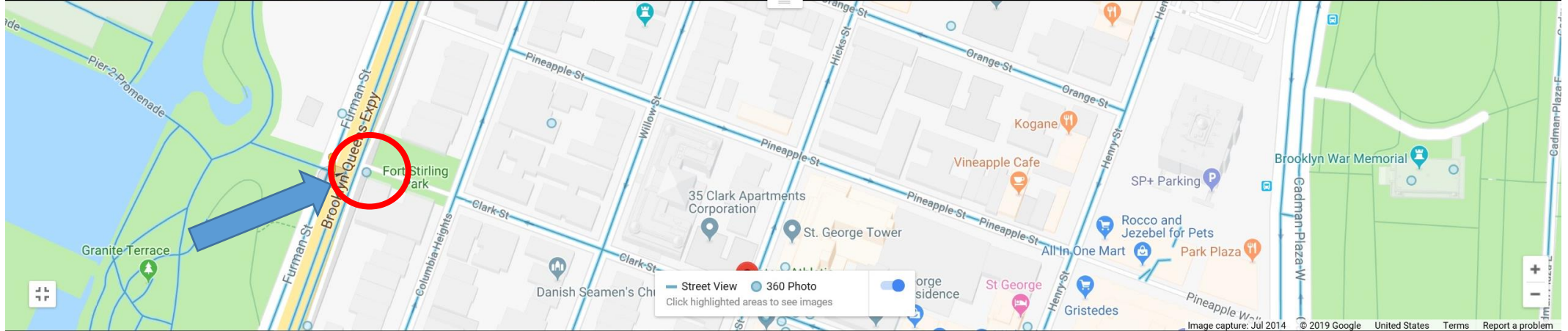
BQE Map with NYCT Facilities

NYCT Facilities: Site Pictures



Furman Street at Cranberry, #6332

NYCT Facilities: Site Pictures



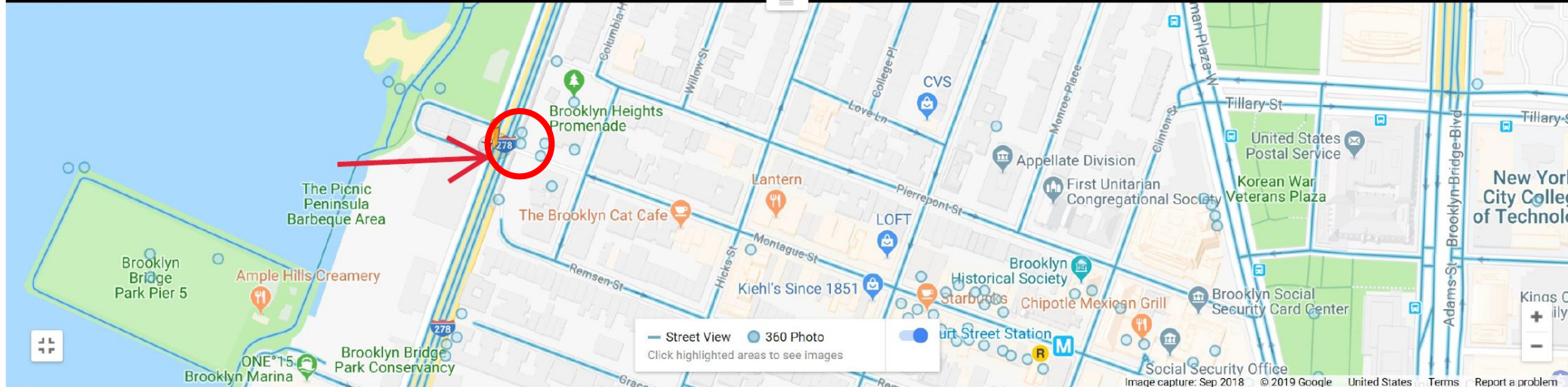
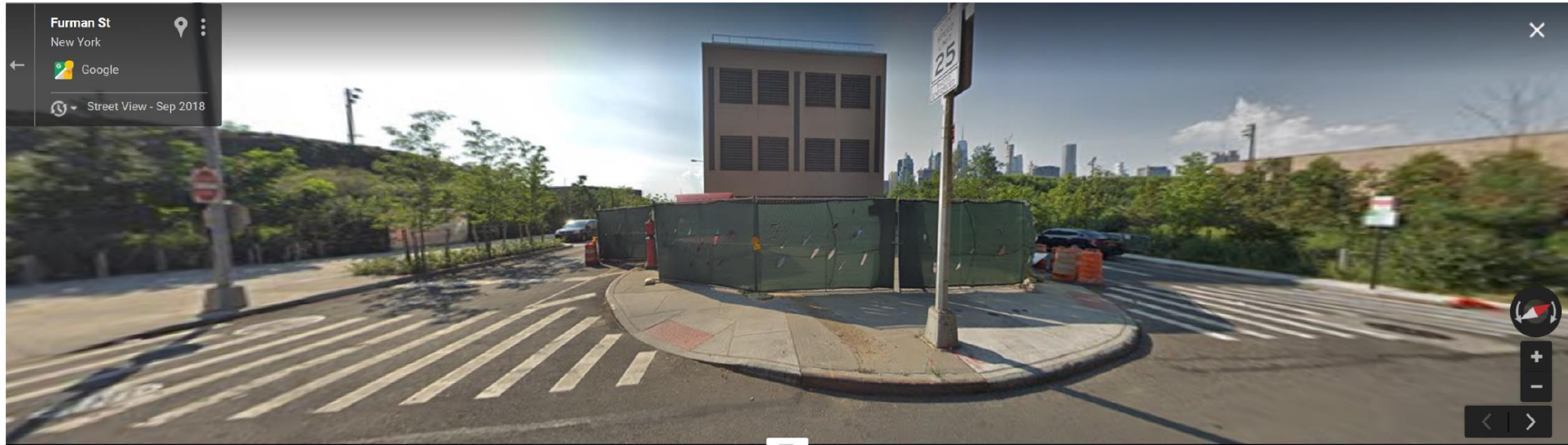
Furman Street at Clark, #7230

NYCT Facilities: Site Pictures



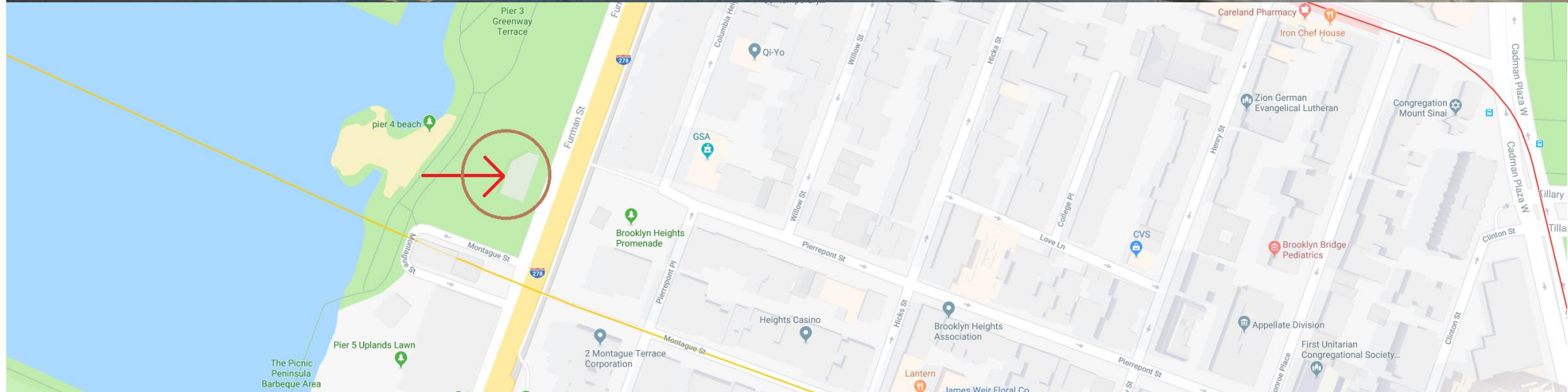
Clark Street NYCT Infrastructure

NYCT Facilities: Site Pictures



Furman Street at Montague, #5105

NYCT Facilities: Site Pictures



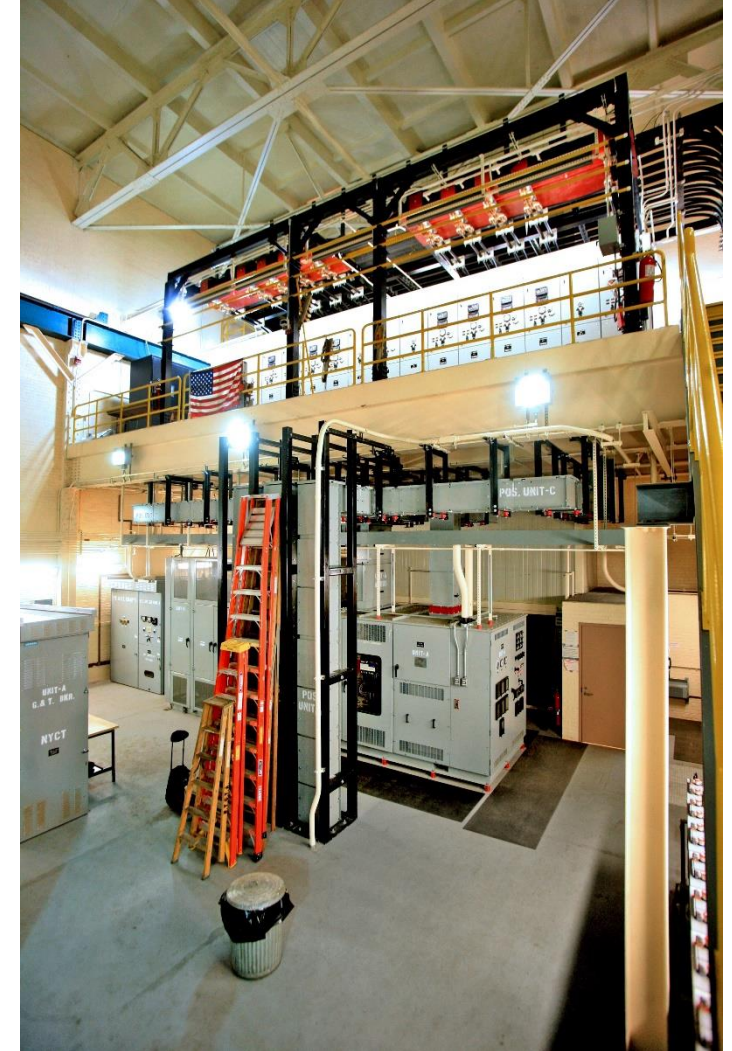
Pierrepoint-Furman Street Substation, supplies 2,3 Train

NYCT Facilities: Site Pictures



Montague-Furman Street Substation, supplies R Train

NYCT Facilities: Substations



NYCT Facilities: Fan Plants



DEP Infrastructure



DEP Infrastructure Considerations

DEP Infrastructure – Project Considerations:

- 10 foot interceptor sewer requires either protection or relocation
 - Further analysis will determine which is necessary and feasibility of both options
- Relocation, if necessary, would likely be under Brooklyn Bridge Park and would require a major capital project.

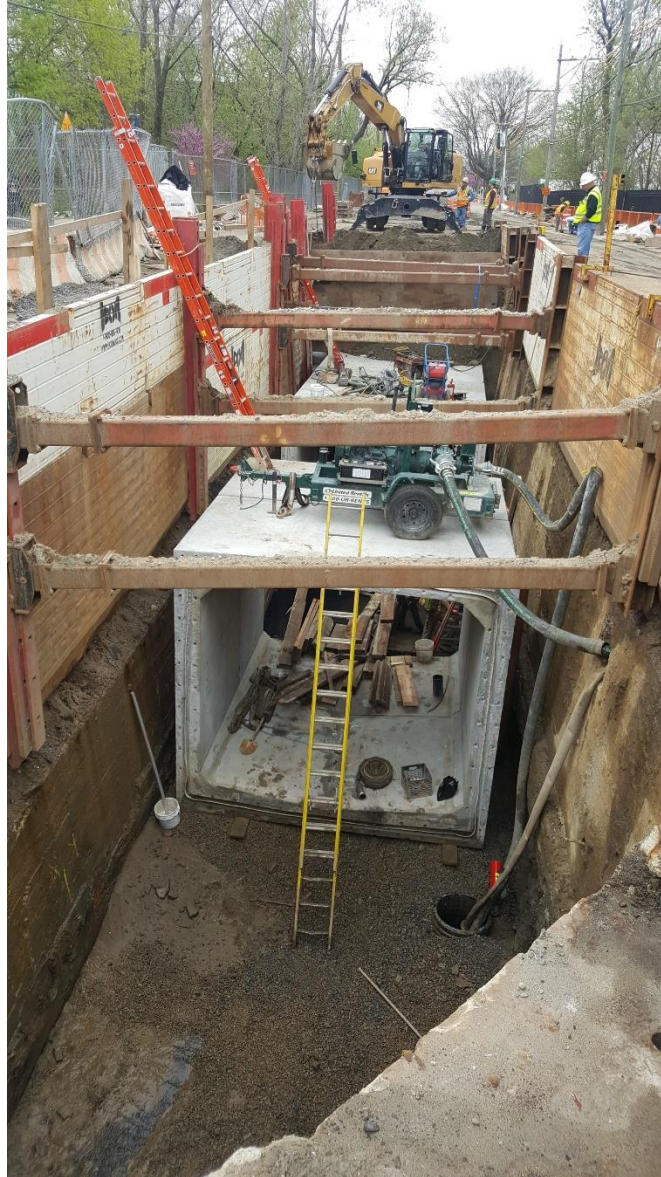
DEP Infrastructure – Maintenance Needs/Access:

- Interceptor: Cleaned every 2-5 years with Vactor Truck. Requires access to manholes every 300 feet and at least 20 feet vertical clearance.
- Regulator: Monthly physical inspections; cleaning/repairs 2-3 times per year.
- Water Mains/Sewers: Infrequent maintenance based on complaints; need 24/7 accessibility.



Interceptor Relocation Example

As presented to the BQE Expert Panel for informational/background purposes only
<https://bqe-i278.com/en/expert-panel/documents>



Interceptor Construction





Public Open Space Adjacent to the BQE